

The Bayou Skew

The Bayou Woodturners' Newsletter

January 2001

Volume 03

Issue 01



CONTENTS:

- Page 1 From the Headstock
- Page 2 Meeting Minutes
- Page 2.... Turning Tips
- Page 4..... Map/Directions
- Page 5..... On the Web
- Page 5... In the Journals
- Page 6.. Around the Clubs
- Page 6.. Sponsors
- Page 7... Member Profile
- Page 9... Gallery
- Page 10.... Demo Photos
- Page 11. Children's Hospital



Bayou Woodturners
P.O. Box 231293
New Orleans, Louisiana 70123

Steve Rome - President
Keith Welsh - Vice President
Eddie Castelin - Treasurer
Dennis Wall - Secretary
Jerry Markowitz - Photographer

From the Headstock

Man it's been cold out there! I hope those turning studios and shops are heated. I hate to see any of you missing out on some turning time due to the big chill. Well, here we go into our third year. Boy, has the time gone by fast! Seems like only yesterday our founding fathers were gathering in that warehouse on Tchoupitoulas to plan the future of our club. With over sixty members strong, the Bayou Woodturners have matured into a close-knit group of people who like to turn wood and share their knowledge with other enthusiasts and teach what they know to the others that are hungry to learn. The club spans many skill levels and provides an excellent forum for this exchange of ideas and inspiration. In order to build on that momentum, we are looking for and need more people to participated in the activities of bringing us together. Please consider to host, demonstrate or volunteer your services for an upcoming meeting or event. If you are not sure when or what you can do, don't worry we will find a task and a niche for you. We really do need your help.

Just before Christmas, Jerry Markowitz, Tom Dunne and myself went to Children's Hospital in New Orleans to present the Christmas ornaments that the club members had turned and donated. Tom had arranged the meeting and presentation. The hospital representatives were really impressed by the pieces and were amazed by our turning skills and talents. They sincerely thanked us for our generosity and have suggested that maybe we team up with them in the future for one of their annual fundraisers. That would help their

Next Meeting
10:00 AM
January 13, 2001

Charlie Kragle's
2165 Augusta Dr
Laplace La 70068

Directions & Map
on Page 4

On the Internet at: www.woodturners.com

From the Headstock continued from previous page

cause and could possibly promote our club and increase our visibility to the public.

This upcoming meeting will feature the turning of spheres and balls and some other techniques on the Jet mini-lathe. Hope you can make it.

See you then,

Steve Rome
President, Bayou Woodturners

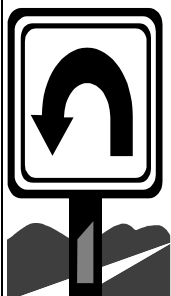
A Big Thank You to the following members for their contributions to the Newsletter this month:

Larry Zarra – for his article on sandpaper “A Woodworking Bargain”

Lyle Terrel – for his woodturning tips - the first of which appears below.

Ron Alexander – who has volunteered to help with the photography for the Member’s Gallery

Malcolm Cheramie – for his “Member Profile” article



Turning Tips

Just for fun use a dead cup center in your lathe tailstock. Instead of lubricating it with oil or wax, use scented oil. It produces surprising olfactory results!

By Lyle Terrell



Our somewhat rowdy bunch got called to order at about 10:25. It took some doing; I guess I need to get Steve a bigger gavel -- or perhaps a small cannon!

This year's Christmas tree with turned ornaments will go to Children's Hospital. If you missed this month's meeting but still have ornaments to turn in, contact Steve or Keith, or Tom Dunne.

We now have jazzy new nametags, courtesy of Ed Castelin. If there are any name corrections (or address corrections, or if you just didn't get a tag) contact Keith.

As usual, we will need folks to host and/or demonstrate in the coming year. A sign-up sheet was passed around at the meeting, but if you missed the chance to sign up and still wish to host or demonstrate, please contact either Steve or Keith. We also need a committee of folks to find meeting places and to see to refreshments. If anyone can volunteer to do these things, likewise contact Steve of Keith.

Bruce Hayden of Riverside Lumber informs us that Riverside will be carrying woodturning tools. Go check it out.

Don Burdick, a turner from Yukon Oklahoma will be in town on the 20th Of January and would like to visit with some local turners. He says no shop is too elementary and no skills too simple not to interest him. If you can meet with him on that date, his e-mail address is DonBurdick@ssa.gov.

Steve has some t-shirts and sharpening jigs (and 1 hat) for sale. If interested, contact him.

Ed Castelin has proposed we add some advertising to the membership directory. If you can benefit from such an ad, a business card-sized space will be available. We are granting our corporate sponsors a half-page space.

Mike Wilensky suggested we list our occupation in the directory. Criteria for the ads will be in the next newsletter. The deadline for the ads is set for the second Saturday in March.

Having met our burden of advertising and notification, we voted on and passed the amendment to our by-laws. Briefly stated, the amendment was this: ***Anyone who does demonstrations for the club or at any club- sanctioned public function must be a member of the American Association of***

continued on page 3

Meeting Minutes continued from previous page

Woodturners.

As you may know, the reason for this change is to get us liability coverage under Saw's umbrella policy.

This meeting, we also voted on officer for the next year. They are as follows:

Steve Rome -- President

Keith Welsh -- Vice President

Ed Castelin -- Treasurer

Dennis Wall -- Secretary

In addition, **Charlie Kragle** has volunteered to be in charge of **membership services**. If you have any membership problems -- not getting the newsletter, name or address corrections, etc. -- contact Charlie. Gorst Duplessis has been in contact with the French turner Jean-Francois Escolin, who will be visiting here this year. He may be able to demonstrate for the club if we can be flexible about our meeting date and time when he is here.

As always, in the coming year we will need turning tips and/or workshop profiles for the newsletter. If you can manage either (or both!), send 'em in. This time, we had several suggestions for topics at upcoming meetings. Tom Dunne suggested we devote one meeting to marketing one's work. This might also be a topic for a future newsletter article. Larry Zarra suggested we do the marketing meeting in the form of a panel discussion. When we do this, Tom has volunteered to organize it. Steve Rome suggested we might devote one meeting to critical discussion. That is, some brave souls will put forward several of their pieces and our professionals, Tom Dunne; Marlow McGraw etc. will critique them. It was suggested that the pieces be displayed anonymously to avoid any public ego bruising. This critiquing session has been tentatively set for our February meeting, but the whole thing may require some fine-tuning. Mike Wilensky suggested that we might do an upcoming meeting on how to use tools other than the lathe. Such tools as the bandsaw, tablesaw and Chainsaw were suggested.

Don Mercante informs us that Arrowmont, the Harvard of woodturning is now opening registrations. David Ellsworth will teach there in June 4th. through 8th. More info may be found on their website: www.arrowmont.org. Keith says the overall cost of a week's stay (tuition, wood, room and board) is about \$750. The cost is: \$280 for the course, \$295 for the cheapest air conditioned room and board. Supplies (wood) run about \$75. As you

may know, we have a raffle going, where everyone who either joins up or renews membership before the first of the year gets a chance. For various reasons, we've decided to postpone the drawing until our January meeting.

During the past year, we have, like a nomadic tribe, moved our meeting from place to place, generally around the metropolitan area. We would like to find a permanent home for the club, a place where we could meet, and perhaps work in between meetings. If anyone can suggest any possibilities, please let us know.

The business portion of the meeting concluded at 11:07. Show and tell:

Tom Dunne: Bowl of extremely wormy mesquite (Tom says he stabilized the outside during turning with -- what else -- duct tape); Vessel of box elder with a segmented birdseye maple top -- finished with lacquer followed by wax.

Larry Zarra: Spalted Sweetgum bowl and numerous small boxes.

Charlie Kragle: Sweetgum bowl with mirado segmented ring; small camphorwood bowl; pens

Ed Castelin: Paduk and maple coopered box with a segmented pie-wedge lid; 2 bell-shaped Christmas ornaments of Corian.

O.B. Lacoste: Two goblets -- wet-turned elm and dry-turned sycamore.

Reidar Klemetsen: Boxelder burl bowl with a ring of ebony veneer and a segmented top.

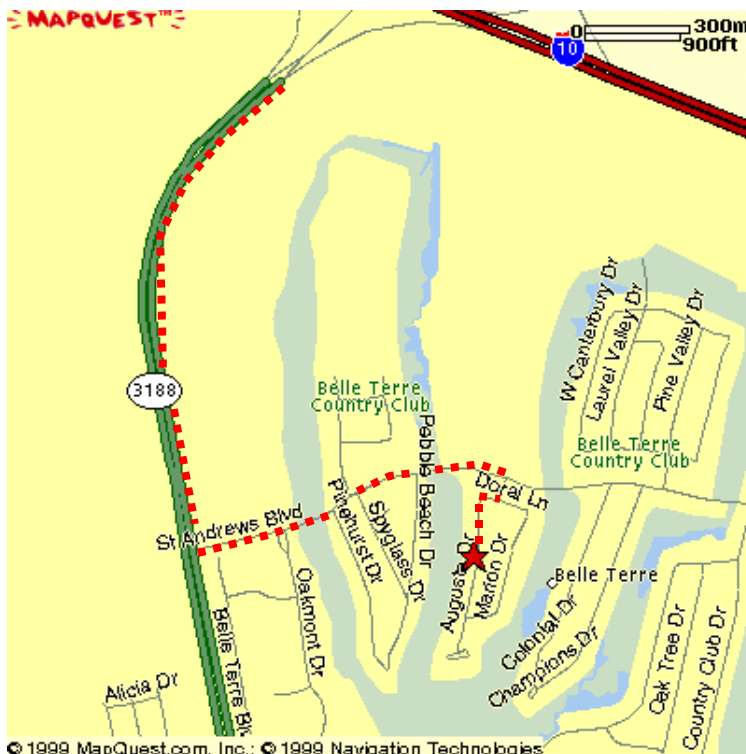
Lyle Terrell: Small segmented bowl of paduk and maple; small box with a secret compartment -- built around a plastic jar.

Gorst Duplessis: box with a round cocobolo top turned on his ornamental lathe and a square base of stabilized material formed on his newest hi-tech woodworking tool -- called a tablesaw.

Paul Burke: Spalted maple bowl; Christmas tree ornaments of Spanish cedar, turned and then painted.; small bowl.

Raffle: \$88.00 -- another record, or very close to it. Finally, a great big thank you to Ed Castelin for getting us a place to meet this time, and for the spiffy new nametags. Also, a mega thank you to Larry Zarra for his truly fine and informative demonstration, and for his new definition of the term "second": a "second" is a piece of work that did not come out quite perfectly. You feel bad about it -- but you sell it anyway!

Merry Christmas and happy turning in the New Year!
Dennis Wall, Secretary



*Directions to Charlie Kragle
2165 Augusta Dr.
Laplace LA 70068*

Take I-10 exit 206 (SR-3188 South-Belle Terre Blvd)

Follow SR-3188 South (Belle Terre Blvd) to ST Andrews Blvd

Turn Left onto St Andrews Blvd

Turn Right onto Doral Blvd

Turn Right onto Doral Lane

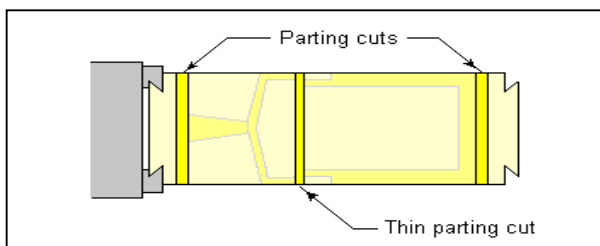
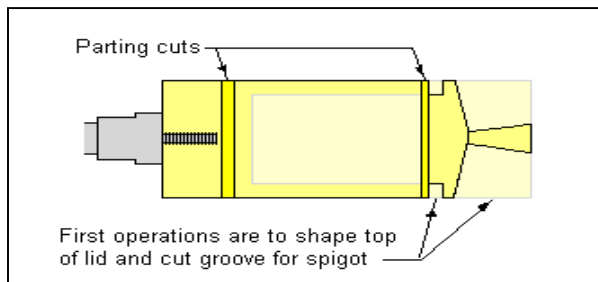
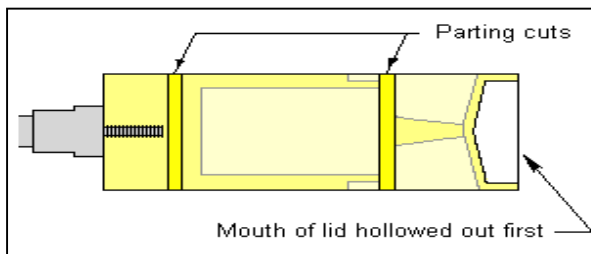
Bear Left onto Augusta Dr.



This month we feature the web site of The Woodturner's Workshop. The site is hosted by Brian Clifford, Chairman of the Lincolnshire Association of Woodturners. This site offers detailed instructions on how to make 6 interesting projects - . Natural edge goblets, A hand mirror, A baby's rattle, Wind chimes, A Windsor stool, and A simple box.



The author explains three different methods for turning a box - all of which are explained in detail on the web site:



Also to be found on this site is an extensive bibliography on woodturning books and videos. An interactive glossary of terms used in woodturning including definitions related to lumber and trees is very comprehensive and well illustrated. An in-depth article on how to determine the moisture content of your wood without a meter. Another article deals with *Creative Woodturning*. An essay by the author on *Trees, wood and people* and a Gallery of some of Brian's works round out this web site.

Text and Images used with permission of the author



In this column we will provide an index to the latest articles and tips found in the various wood working magazines that relate to turning. References marked with an asterisk are available from the Bayou Woodturners Library (see Denis Wall to check out)

Creusen 7500TS slow speed grinder (tool review) Wt V88 pp84-85

Turn a Bowl: Sanding by Ernie Conover WWest May-June 2000

WOODTURNING A VICTORIAN HATSTAND by Paul Ross CW June/July 2000 - Volume 3, No. 3

**Make a gauge, save some bowls (Shop Tip) Wood Aug'00 V125 pp30*

**Oil Finishes-What You Need to Know Wood Aug'00 V125 pp64-65*

Your Guide to Sizing up Staves and Segments Wood Sept'00 V126 pp16-18

Teknatool's Nova Ornamental Turner—Part 2 MW Jun '00

HARDWOOD AND IVORY TURNING TOOLS MW Jun '00

Nova 3000 Outboard Tool Rest MW Jun '00

MW – More Woodturning
 WWest – Woodworking West
 AWR – Australian Wood Review
 CW – Canadian Woodworking
 AustW – Australian Woodworker
 AW – American Woodworker
 Wood – Wood Magazine
 AWt-American Woodturner
 Wt - Woodturning

Around the Clubs



This column provides a look into what other clubs around the country are doing; how they are organized, what their demonstrators are showing, and how they are promoting woodturning among their members and the public

Greater Vancouver Woodturners Guild

The club has a short presentation focusing on a general topic geared to the novice woodturner (Focus on Fundamentals) and then has the main demonstration. In October the Focus on Fundamental topic was Electric Motors Part 1 presented by Larry Stevenson. The Main presentation was given by Ross Pilgrim on Turning a Watch. The Club also hosted the Canadian Woodturning Competition at the Cloverdale Wood Show.

The November edition of the Club's Newsletter (available at www.gvwwg.ca) contains an account by the three judges describing their approach to the activity of judging and on what principals they based their decisions.

Northwest Washing Woodturners

The Club is beginning discussions on what they will make for the AAW Chapter Collaborative Challenge.

Piedmont Triad Woodturners Association

The Club has a turning theme for each month and members are asked to bring their project to the meetings. In August the theme was spinning tops and 15 members brought in a wide assortment of designs. September's theme was - a tree ornament, October's will be weed pots, and November's - lidded vessels.

Demonstrator for the October meeting, Joe Nelson, will show how to make a plant stand composed of a turned top, spindle turned center post, and three feet.

Bayou Woodturners Corporate Sponsors

Acadian Hardwoods
#1 Industrial Parkway
Ponchatoula LA 70454
(504) 386-6079
(800) 489-6079

Southern Saw & Cutter Co. Inc.
5808 Plauche St.
Jefferson, LA 70123
(504) 736-6063
Fax: (504) 736-6064
(800) 229-6063

Gueydan Lumber & Plywood Inc.
4300 Airline Dr.
Metairie, LA 70123
(504) 833-2828

Riverside Lumber Co.
5451 Morrison Rd.
New Orleans, LA. 70126
(504) 242-6624

MEMBER PROFILE

Malcolm Cheramie



In 1993 Malcolm Cheramie started Wood Stuff of Folsom as sole proprietor and chief wood turner. At the time, Malcolm was employed by the New Orleans Police Department and was nearing retirement. Knowing that he did not want to continue with a career in law enforcement Malcolm decided to go into woodworking. First trying wood clocks and small wood furniture he decided that this was not the direction that he wanted to go. Still he enjoyed working with wood.



One day he read an article written by Nick Cook (noted wood turner from Georgia). This article was about how to turn wine bottle stoppers. As this article captured his interest Malcolm bought a cheap Sears lathe and took lessons on how to turn bottle stoppers

from well-known local turner Ed Hernandez.

Turning wine bottle stoppers led to other areas of interest in wood turning. A Delta lathe with a 12-inch swing and 36" bed was soon purchased. Turning wood bowls became Malcolm's next passion.

He traveled to Pennsylvania in 1995 to take turning lessons

from world-renowned artistic wood turner David Ellsworth. This developed into a desire to turn more artistic bowls than functional types although the



bowls he turns can be considered a combination of both. Turning bowls in itself is satisfying but upon gaining experience Malcolm found that the lathe could be used

for more than turning bowls and stoppers. He now enjoys a variety of types of turnings that include birdhouses, walking canes, pens and numerous other items.

To see more examples of Malcom's work be sure to visit his web site at www.finewoodturning.com

A Woodworking Bargain

From Larry Zarra

The path to some bargains is often arrived at in a roundabout way. Consider sandpaper. It is perhaps the most used and least appreciated tool in the shop. I feel that sanding (tedious as it is) is a task that needs to be done thoroughly, including working through a reasonable progression of coarse to fine grits.

I have been having a running argument with the local mega-hardware store. They only order 150 grit in 5 sheet packs. This costs about \$2.00/pack, or \$.40/sheet. Not a lot of money, but I seem to use more 150 grit than any other grit because for most (but not all) projects, it is the coarsest grit I use.

Now I may be picky, but 120 is too coarse and 180 is too fine. I have asked the clerks and even a few managers to order 150 grit sandpaper in contractor packs of 100 sheets. The cost per sheet goes down to about \$.20, and I do not have to buy another pack every weekend. I consider my request to be quite reasonable, as they stock contractor packs in 120 grit and 180 grit, but they will not or can not customize their own orders; they have ordering rules to follow which do not include customer requests.

So, I had been dealing with the situation on their terms, ...until my supply of 320 grit sandpaper got low. They do not stock 320 grit sandpaper. They have 220 grit and they have 400 grit. You and I know that you can't sand out 220 grooves with 400 grit sandpaper. So I looked around on the web, and found a place called Klingspor's. They sell sandpaper. I tried their Aluminum oxide 320 paper (\$1.75 per 5 pack) and their Stearate 320 paper (\$2.17 per 5-pack). Both are very good.

About the bargain. Remember that the mega-hardware store sells sandpaper for \$2.00/pack, or \$.40/sheet. For 150 grit sandpaper, this weighs in at 2 ounces of sandpaper. At this rate, a pound of sandpaper would cost \$16.00! Klingspor's sells a "bargain box", 20 pounds of sandpaper for \$29.00, which come out to \$1.45 per pound. And the quality is astounding. It is all cloth backed coated industrial grade sandpaper, much like a new sanding belt. It is in assorted large pieces and ends of rolls. I got the medium and fine assortment; the coarse end of their medium grade is about a 60 grit. This is the best deal I have found in a long time.

Klingspor is located at www.woodworkingshop.com and their phone is 1-800-228-0000

Who's Who in Bayou Woodturners?

Eddie Castelin has made an offer to create a club directory for 2001. He will handle the layout, printing and distribution of the directory at no cost to the club. The format is one 2" X 3 1/2" business card ad for each member. If you wish to use your woodturning business card for your spot, then send him at least 2 cards. If you want some other information in the space allotted for you, then create a card-sized entry. He will assemble these into pages of 10 with an informational cover. This directory will list active, current dues paying, members only! There will not be provisions for commercial advertisements in this directory; it may be something we want to consider in the future. He will need all entries by the day of the March meeting. He will go to press within a week of that meeting. If you do not submit information for the directory, He will use the vital information provided by the Membership Director - Charlie Kragle. You can send your information, cards, etc to Eddie Castelin, 330 Highway Drive, Jefferson, LA 70121. You can contact him at 835-1413, 416-0896 or eddiecastelin@hotmail.com

Treasurer's Report

By Eddie Castelin

Beginning Balance	1 Dec 2000	\$2394.04
Income		
Dues	14 @ \$25.00	\$350.00
Newsletter	1 @ \$12.00	12.00
December Raffle		78.00
Clothing sales		<u>15.00</u>
Total income		\$455.00
Disbursements		
Postage		\$56.78
Refreshments		<u>30.00</u>
Total Disbursements		\$88.78
Balance as of 1 January 2001		\$2762.26

Membership Chairman Named

Charlie Kragle was named Membership Chairman at the December meeting. Charlie will be handling all membership business for the club. His duties including collecting and accounting for dues, renewals, and new memberships.

Charlie will take the burden of these chores off the office of the Treasurer and spread the workload of the organization over more shoulders in the future.

If you have questions regarding your membership, dues, renewals, etc. contact Charlie at 504-651-3095.

D u e s a r e d u e

Less than 50% of registered members have paid dues for 2001.

Of the 72 members on the rolls,

only 35 have paid their dues since September 1, 2000.

Members must pay their dues by March 1, 2001 to be included in the Organization's new directory or to receive future issues of the newsletter.

Dues should be mailed to

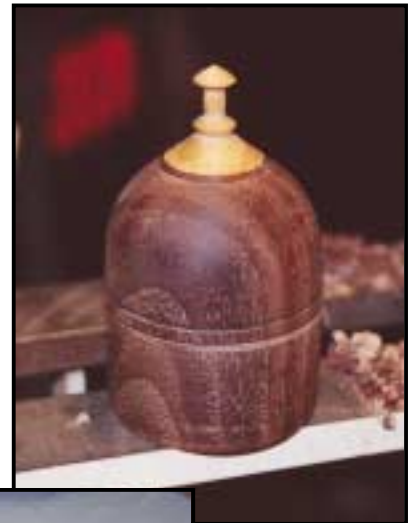
Charlie Kragle C/o 2165 Augusta Drive, Laplace, LA 70068

Makes checks payable to Bayou Woodturners.

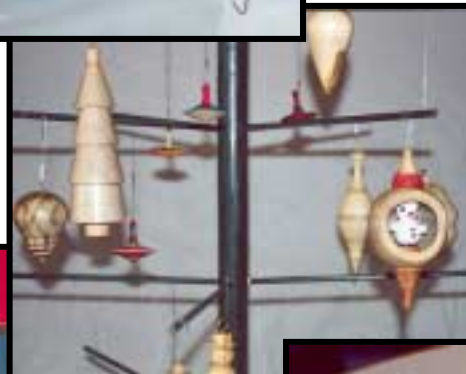
Member's Gallery



Turning A Box with Larry Zarra



The Bayou Woodturners Donate
Turned Wood Christmas Ornaments
to Children's Hospital





Bayou Woodturners
P.O. Box 231293
New Orleans, La. 70123

Place
Stamp
Here

The Bayou Skew

The Bayou Woodturners' Newsletter



Inside this issue:

The Bayou Woodturners Donate
Turned Wood Christmas Ornaments to
Children's Hospital

Member's Gallery

Larry Zarra demonstrates – How to
Turn a Lidded Box

And much more --

