

The Bayou Skew

The Bayou Woodturners' Newsletter

April 2003

Volume 05

Issue 4



CONTENTS:

- Page 1.... From the Headstock
- Page 2.... Meeting Minutes
April Mtg Agenda
- Page 4.... Map/Directions
- Page 6... In the Journals
- Page 7.. Challenge Results
- Page 9... Collaborative Info
- Page 10.... Hershel Miller Demo
....Photos



Bayou Woodturners
P.O. Box 231293
New Orleans, Louisiana 70123

Eddie Castelin President
eddiecastelin@cox.net
Charlie Kragle Vice President
ckragle@earthlink.net
Gordon Ousset – Treasurer
Ousset@datastar.net
Dennis Wall – Secretary
dwall@mail.jefferson.lib.la.us
Jerry Markowitz – Newsletter
jerrymarko@yahoo.com

From the Headstock

What a great meeting at Riverside! Hershel Miller was a very good demonstrator and shared some great turning tips with us. I went right back to the shop and ruined some good stock rushing one of his concepts. Then I took my time and turned a hexagon shaped bowl out of some sort of cedar I picked up in the raffle. The guys at Riverside did good for us and well by us. They gave us \$100 worth of gift certificates to use, as we wanted. I used some for the competition, raffled off a \$50.00 GC and saved a few for later competitions.

The Collaborative Challenge is off and running and I have included a recap of the committee meeting later in this newsletter. This is a good first step towards a great project. Attend the meeting next month and get involved in this project. There is only room for a few on the committee, but lots of room for you to get involved in the turning.

I've received some comments about the advanced pace of the meetings. We only have a few hours together each month and I want to make the most of them. I believe that starting on time and eliminating lapses in the program makes the meeting flow better and we get in more information. Please try to make it to the mini sessions prior to the meeting and you'll be there for the start. By the way, the voting for the Craft Supplies President's Challenge will always start at the beginning of the meetings. We need the time to count the ballots and pass out the accolades.

We head out to Steve Rome's new, almost complete, wood shop next month. Steve wanted us to wait until it is finished, but when is any shop ever fin-

Next Meeting
10:00 AM *
April 12th, 2003
Steve Rome's Shop
326 Almedia Rd
St Rose, La

Directions & Map
on Page 4
***Bayou Collaborative Mtg**
at 9:00 AM
***Mini-Session at 9:30AM**

On the Internet at: www.woodturners.com

From the Headstock continued from previous page

ished? Bring some raffle wood and come see Rome's new digs. Don't forget to bring those "Show & Tell" items this month; we want to see what you've been up to.

In the next few months we'll be moving around a little, have another Craft Supplies Presidents Challenge, start on the Collaborative Challenge and much more. Get your smocks on, sharpen up those skewers and let's start Makin' Shavins'.

Eddie Castelin

President, Bayou Woodturners

Agenda

Meeting at Steve Rome's Shop

Mini Session at 9:30,
Main meeting at 10:00
Show & tell
Wood Raffle
Main demo
Steve Rome - Goblets



See more of the Craft Supplies President's Challenge: Saucers, Plates, & Platters on pages 7 and 8.



Meeting Minutes

Our meeting (one of the shortest business meetings I can remember) was called to order at 12:05, and since we had some new members present, President Eddie Castelin took time to introduce all the present and former club officers. We thanked the good people at Riverside Lumber, for not only hosting us this time, but for providing a \$50.00 gift certificate, which we raffled off in a special drawing.

Our head of membership services (Vice President) Charlie Kragle, informed us that an updated edition of the club resources directory will be out shortly. If you have any changes to your membership info or you have any products or services you want advertised, now's the time to get them to Charlie.

If you were thinking about applying to Arrowmont for the spring/summer term, you're too late! They are completely booked up for that term. Keith Welsh is one of the luck ones that got in, and has promised to show us what he learned in a few months time (Larry Zarra is also going to Arrowmont).

If you have any comments, critiques, or suggestions regarding our participation in the recent WoodWorking Show, by all means make them known.

The next Crafts Supplies President's Challenge will be goblets. There will be two categories: Artistic and Functional. The judging will take at the June meeting.

We now possess a small (very) video camera, projector, and sound system (some of the equipment is on loan at the moment, but the deal to make them officially ours is being finalized). We tested out the system at the March meeting and it worked pretty well. We are considering the possibility of adding a second camera with an A/B switch so we will be able to see from the tailstock end as well as overhead.

April 4th and 5th, Marchand will be hosting a tool show, with folks from DeWalt, Delta, and several other tool companies that weren't at the WoodWorking Show.

Our April meeting will be held at Steve Rome's new shop in St Rose. Several of us that helped Steve out with the construction will be very anxious to see the results.

Our May meeting will be held at the Harahan Senior Center. In June we will meet at Acadian Hardwoods. We'll be back at the Senior Center for our July meeting. We will have a representative from the LSU Ag Center to instruct us on identifying different woods. Larry Zarra will host our August meeting. That 's as far ahead as we've been able to plan.

The business portion of the meeting concluded at 12:18
continued on page 3

Meeting Minutes continued from previous page

Raffle: \$ 114.00 Second raffle (for gift certificate): \$47.00

There was no Show & Tell this month due to the President's Challenge and Guest demonstrator.

That's all the news for this time, folks. Come on out to St Rose in April and see what a truly modern woodworking shop looks like.

**Denis Wall,
Secretary**



Part of the large turnout at the Mach Meeting – Note the new video system in the background



Keith Welsh's Laser Guided Drilling Depth Guide

**Treasurer's Report
By Gordon Ousset**

Beginning Balance:	\$3,401.74
Income:	
Membership	\$50.00
Raffle	\$114.00
Special raffle	\$46.00
Calendar	\$15.00
Total	\$225.00
Disbursements:	
Demo Fee	\$250.00
Newsletter/Postage	\$87.25
Bank Charge	\$8.00
Total	\$345.25
Balance - / March 10 2003	\$3,281.49

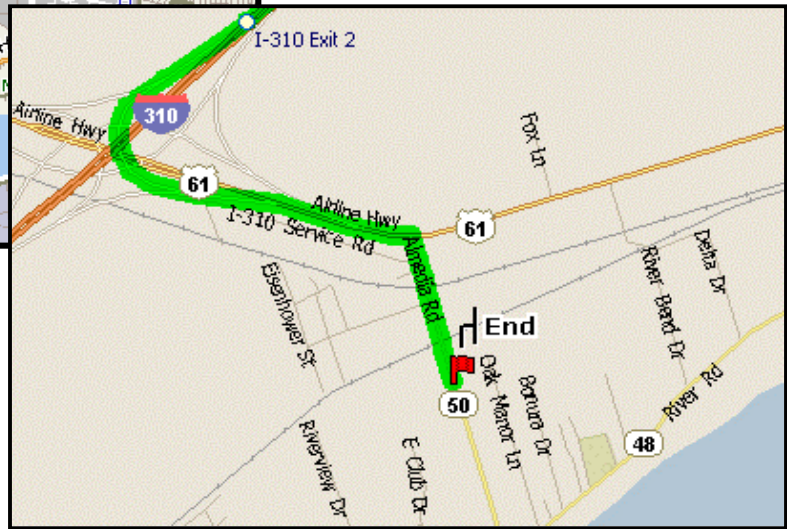
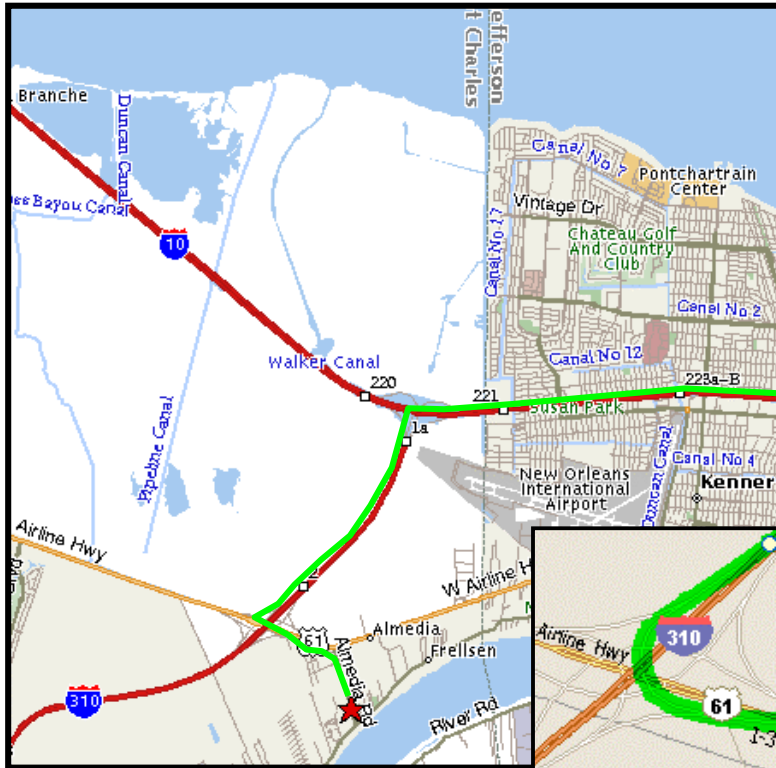
Craft Supplies President's Challenge
The next challenge will be goblets. With two categories, functional and decorative. Gift certificates will be awarded to the first place in each category and awards will be given for second and third place.

The Functional category is limited to goblets that can and will hold a liquid. The Decorative category is for goblets, which are not designed to hold liquids but are art pieces.

The club will provide adequate amounts of MD 20/20 for use in testing the functional goblets.

Please do not sign or place your identity on any piece in the contest. All turner identities must be blocked out prior to placing the item for judging. Judging begins promptly at 10:00 AM at the June meeting. All entries must be numbered and on display by 9:55 AM.





Directions to April Meeting

From New Orleans – take I-10 West.

At I-10 **Exit 220**, take Ramp (RIGHT) onto I-310 towards I-310 / Boutte / Houma Go about 2.0 Miles.

At I-310 **Exit 2**, turn RIGHT onto Ramp towards US-61 / Kenner / Norco (Keep LEFT to stay on Ramp towards US-61 / Kenner)

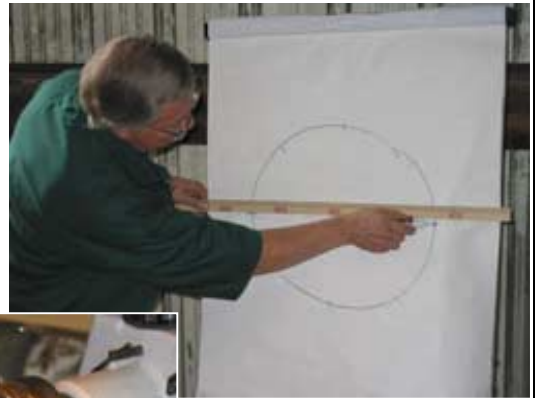
Bear RIGHT (East) onto US-61 [Airline Hwy] for about .3 miles.

Turn RIGHT (South) onto SR-50 **Almedia Rd**

326 Almedia Rd, St Rose, LA 70087 will be on your left (about .4 miles down the road)

326 Almedia Road, St Rose, La 70087

Turning a
Multi-Scalloped
Bowl
with
Guest Demonstrator
Hershel Miller



Turning on the Bias
with
Hershel Miller
Photos on pages 10 & 11



In this column we will provide an index to the latest articles and tips found in the various wood working magazines that relate to turning.

The Australian WoodWorker:

Issue Number 105, September 2002

Turning Simple Dolls by Ernie Newman

Pencil gauges make for smart and efficient production of these stylized children's' toy.

Cutting Inside Deep Bowls by George Hatfield

A modified shape on the bevel of the bowl turning gouge makes turning inside deep bowls easier.

A Revolution in Turning Technology by Howard Lewin FW online

www.taunton.com/finewoodworking/pages/w00132.asp

Modern tools cut through conventional wisdom, opening up the craft

If you have any questions, comments, turning tips, articles, photos, etc. you wish to put in the Newsletter please contact

Jerry Markowitz at:

email - jerrymarko@yahoo.com

mail - 620 Chambertin Dr.

Kenner, LA 70065

phone (504) 464-6050



TREDDLE LATHE

Anyone out there interested in building a copy of the treddle lathe as shown in the most recent issue of Woodturning magazine. Contact Eddie Castelin at 382-4507

Wanted

Wanted to buy, an enclosed "Wells Cargo" type trailer. 5' X 10' or slightly larger. Will entertain all proposals. Contact Eddie Castelin @ 504-382-4507

Corporate Sponsors
Bayou Woodturners

R.J. Marchand
Contractors Specialties Inc.
3515 Division Street
Metairie, La
(504) 888-2922



Riverside Lumber Co.
5451 Morrison Rd.
New Orleans, LA. 70126
(504) 242-6624

Craft Supplies USA
www.woodturnerscatalog.com



FOR SALE

Delta Universal Wet/Dry Grinder with stand \$90.00
Includes basic machine with 1/5 HP, 120V, 60 Hz.
Motor, 10" and 5" diameter aluminum oxide wheels,
tool rests, eye shield, wheel guard. Slow, 70 RPM,
10" wet wheel for cutting to and away from the
wheel. The faster, 3450 RPM, 5" dry wheel is ideal
for reshaping tools.

Comes complete with a Delta stand customized for this tool.

Contact Eddie Castelin @504-382-4507

Crafts Supplies President's Challenge: Saucers, Plates, & Platters



Most Artistic- Platter: O.B. Lacoste



Steve Widdicombe



Mix Media-Plate: Laura Ousset





O.B. Lacoste



Most Artistic- Saucer: Charlie Kragle



Mix Media- Platter: Mark Demanuelle



Best Use-Platter: Gorst Duplessis



Most Artistic& Best Use- Plates:
Mark Demanuelle



Mix Media- Saucer: Larry Zarra



Larry Zarra



Best Use-Saucer:
Ken Lacassin

THE CHALLENGE

Bayou Woodturners have taken their second step in creating a project for the 2004 AAW Collaborative Challenge. In February 2003, an exploratory committee of several members paved the way for the creation of a permanent committee for this project. That committee, which was open to all members and advertised in the Bayou Skew, has elected a chairman, vice-chairman and technical designer for the project.

Keith Welsh will act as chairman, Charlie Kragle is the vice-chairman and Charlie will also act as technical designer for the project. Other current members of the committee include Laura and Gordon Ousset, Jerry Markowitz, Ben Sulzer and Dennis Wall. For the sake of efficiency, I have suggested that this committee be limited to only 7 members. But there is no limit to how many woodturners can be involved in the actual creation of the project. In fact, the more members the better the project.

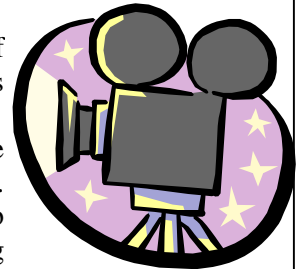
“The Bayou Challenge”, as the project will be known, is still in the discussion stages. The committee’s first inclination is to create a roulette wheel. A preliminary program was shown to include about 1/2 of the club’s members in at least 20 different stages of work. But this is still only a concept, and some members want more time for input. The 2004 Symposium is about 15 months away. To select, design, program, create and deliver an award-winning project of this magnitude, you will need every single day of those 15 months.

“The Bayou Challenge” committee will meet at 9:00 AM at the April meeting. Committee selection will be completed and the committee will undertake the task of recommending a project to the club at the May meeting. Making shavings should happen in short order. – Eddie Castelin

HELP WANTED

Bayou Woodturners is looking for a Film Critic. Job could include traveling to all parts of the world, previewing films from all the major studios, meeting stars and attending parties and receptions.

But you will really be looking for videos to add to our ever-expanding library. You’ll have to scour websites, catalogs and 1-800 houses to find everything there is on woodturning. You may even have to view demo tapes and preview tapes before anybody else in the club ever gets a chance at them. We need your help. If you are interested in possibly meeting movie stars, and helping us to expand our library please see Eddie Castelin.



UTAH Woodturning Symposium 2003

The site is Provo Utah, Brigham Young University, May 8,9, & 10 2003. The occasion is a gathering of some of the best and brightest woodturners in the world. You’re invited to join Stuart Batty, Jimmy Clewes, Phil Irons, Kip Christensen, Nick Cook, Dale Nish and many more for three days of non-stop woodturning.

You have to act fast registration closes soon. All the details you need are available at utahwoodturning.com or by calling 801-422-2021

Smile, You’re on Not-so-candid Camera!

The club has secured a small video camera for demonstration use. Many of you saw this camera and the projector I donated at the March meeting. We received many compliments on the additions and a couple of suggestions. Next month we will add another camera, move both to the tailstock end of the lathe, and add a light on the workpiece. All of this will be switched to an AB switcher so we can show where the action is. We’re also working on adding audio to the package, routing it all through a video recorder and saving the tapes for the library.

This is going to require some testing, a few changes in how we handle demonstrations and some patience on your part. In short order we should have the bugs worked out and improve what we do by at least 100%.

You can help the entire process by bringing one folding chair to the meetings. If we can get more spectators seated down front we’ll all be able to see a little better. By the way, I considered buying some chairs for the club, but we’re hauling enough from meeting to meeting now. ***Bring a chair.***

Turning On The Bias with Hershel Miller Three "Cornered" Bowls



The Cube – For an Oil Confetti Lamp Hershel starts with a 6” cube. Remove opposite corners to mount on the lathe



Hershel is removing the unwanted corners



Forming a “cone shape” with base of cone at the live center

After the based is shaped, a tenon is formed for the chuck, and the piece is reversed. A hole is drilled to 1/2”-3/4” below the side “U”s.





Hollowing out the inside of the bowl



Jam Chuck for reverse turning



Form the base, sand and finish the outside using your finish of choice

For more complete instructions for **Turning on the Bias** and cutting diagrams for the multisided bowls contact Eddie Castellin and he will provide additional copies of Hershel Miller's notes.

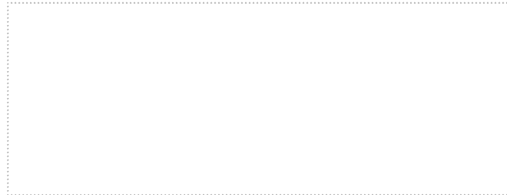


Bayou Woodturners
P.O. Box 231293
New Orleans, La. 70123

Place
Stamp
Here

The Bayou Skew

The Bayou Woodturners' Newsletter



Inside:

- Guest turner Hershel Miller - Turning on the Bias
- President's Challenge results
- Collaborative Challenge Info
- April Meeting Agenda
- And much much more..



Tough competition makes deciding on the winners for the Crafts Supplies President's Challenge: Saucers, Plates, & Platters very difficult.