

The Bayou Skew

The Bayou Woodturners' Newsletter

September 2005

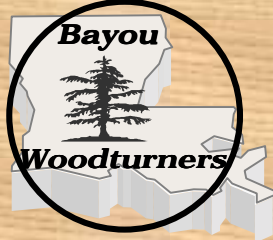
Volume 07

Issue 9



CONTENTS:

Page 1 From the Headstock
Page 2 Meeting Minutes
Page 3 Upcoming Events
Page 4 Pig Roast News
Page 7 ... On the Web
Page 8 Ornament Photos
Page 10 ... Member's Gallery



Bayou Woodturners
330 Highway Drive
Old Jefferson, LA 70121

Eddie Castelin – President
eddiecastelin@cox.net
Dale Campo – Vice President
d-campo@cox.net
Ray Hoffmann– Treasurer
Roach1no@aol.com
Dennis Wall – Secretary
martha1dennis@aol.com
Jerry Markowitz – Newsletter
jerrymarko@yahoo.com
Dave Beehler - Library
davidcbeehler@aol.com
Charlie Kragle – Membership director
ckragle@earthlink.net
Joel Blazek –Events Manager
joelblazek@bellsouth.net
Al Reisz – Development Director
furnwks@bellsouth.net
Steve Brunswick – Collaborative Challenge
steven.brunswick@bisys.com

From the Headstock

This is one busy time for The Bayou Woodturners. We have more going on in this club than most clubs can ever hope for. I'm very proud of all the involvement we have from the membership. I can count at least 20 members working on one facet of the club or another. And there is more on the way. Let's start with the fact that we now have a collaborative challenge project for the 2006 AAW symposium in Louisville. Soon we will present you with a complete program for the birdhouse community. Steve Brunswick is handling this project and will need your help to plan, turn and present this project. Then we received word that the Wood Show is back in town in early October and Keith Welsh is working on putting together a demonstration package for that weekend. If you're interested in working on this program contact Keith directly.

Dale Campo reports that the *Freedom Pen challenge* is closing in on 100 pens. We have a few pens that are not identified as to who turned them. Check with Dale and be sure we know what you turned and what wood you used. Remember, this is our gift to our troops serving to protect our freedom. Get out there and turn some wood.

October 29 is the big day for our annual Pig Roast. Dick Gahn promises to really put on a porker for this one. We want to juice up the belt sander drag races this year and we'll have two new features; a grand prize of a brand new belt sander and a special "Claiming Race" for the not so timid racers. Bring your sander and get ready for the drags. At the pig roast we'll also have the *Wooden Jewelry challenge* and a special silent auction for tools donated to the club by Lyle Terrell. These one-of-a-kind tools are a special prize, which you will have a chance of buying only at the pig roast.

It's almost time to select the officers for 2006

Next Meeting
10:00 AM*
September 10, 2005

The Furniture Medic
74030 Hwy 1070
Goodbee, La

Directions & Map
on Page 11
***MiniSession at 9:00AM**

On the Internet at: www.bayouwoodturners.com

From the Headstock continued from previous page
and we have a nominating committee in place for selecting a slate of officers. If you are interested in serving your club in 2006, contact Ben Sulzer, Dave Beehler or Bill Toups.

Don't miss the September meeting. We'll be voting on the 2006 Woodturning Arts calendar and finalizing plans for S.K.E.W. II. I'm heading out to the shop to turn the last of my pens for the **Freedom Pen Challenge**.

*Eddie Castelin,
President, Bayou Woodturners*



Our August meeting was called to order at 9:52 a.m. If you anticipate needing any superglue soon, contact our Superglue Guru, Ben Sulzer. We need to make another bulk glue order soon; we're totally out of thin superglue.

We really, REALLY need some fresh demonstrators for our upcoming meetings. Come on, guys, let's not let Eddie Castelin do all the work.

So far, we have spent some \$32,000 on Craft Supplies bulk orders. Just a reminder, if you need to modify your order, please don't contact Craft Supplies yourself. Let Eddie know and he'll make the change.

Our birdhouse condo project for next year's AAW group project is coming along, but we could use more participants. The turning assignments will be doled out soon, and we must be finished with the project by June 1 of next year.

Our first order of golf shirts with the club logo just came in. If you want to get in on the next order of golf shirts, contact Eddie Castelin.

As you may know by now, we have postponed the *jewelry challenge* until our annual pig roast. This will, hopefully, permit more female participation in the judging. We will have the *egg challenge* in September.

We have meeting locations nailed down through December of this year. However, we will need new meeting locations next year. We can get the Senior Center only a few times in the coming year.

This meeting was the final photo session for the *Calendar Competition*. We vote on the entries next month. Incidentally, the entries chosen by lot for inclusion in the calendar will be picked only after all entries have been voted on.

Our **Freedom Pen** project will wrap up at the October meeting. See how many pens you can turn for our troops overseas by then.

Skew II will take place on September 24th at the K.C. Hall on Oak Street, 8:30-4:30. There will be four stations, one dedicated to fundamentals for new turners. There will be three sessions, with a critiquing session as the middle one. Tickets are \$20.00 for members, and will be available for sale at next month's meeting or online.

Tickets will not be sold at the door! Lunch is included

continued on page 3

Treasurer's Report By Ray Hoffmann

Beginning Balance:	\$684.67
Income:	
Library late fees	\$5.00
Membership	\$25.00
Bulk Order Tariff	\$104.27
CA Glue	\$190.00
Cap/Shirts Sales	\$500.00
Tool Raffle	\$18.00
SKEW II Registration	\$280.00
Wood Raffle	\$92.00
Total	\$1,214.27
Disbursements:	
Hall Rental	\$25.00
Newsletter printing	\$23.49
Newsletter Postage	\$29.60
Domestic Corp Rpt	\$5.00
CA Glue Purchase	\$67.00
Caps/Shirts	\$518.10
Equip.&Parts	\$86.38
Total	\$754.57
Balance - Aug 30, 2005	\$1,144.37

Upcoming President's Challenge

"Get a Grip" – turn a tool handle and show us your ideas and techniques for handles that work. Stay tuned for more details.

Meeting Minutes continued from previous page

in the ticket price.

We now have a nominating committee for next year's club officers. They will come up with a slate in November. Nominations from the floor will be open at that time.

A couple of juried shows are coming up in the fall. Fresh Art will be in October. Three Rivers will be November 12-13.

We will return to Trailhead in Slidell in October. Don't forget this is a venue where you can sell some of your stuff.

The Wood Show returns to New Orleans October 7-9. If you wish to participate and get in to the show for free contact Keith Welsh. There will be a prize for the best item turned at the show.

The silent auction of the tools our late member Lyle Terrell made for the club will take place at the pig roast in October.

The business portion of the meeting concluded at 11:07.

*Dennis Wall
Secretary*



Every wonder just how heavy that log was you haul from your neighbor's yard? Check out this month's "On The Web" column (page 7) to find where you can access a *Log Weight Calculator*.

Upcoming Events

Sept 10, 2005



Egg Challenge

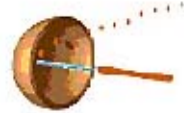


Voting on 2006 Calendar Photos



Sept 24, 2005

**SKEW II
Workshop**



Oct 8, 2005



Freedom Pen Project



WYES Auction

Oct 29, 2005

6th Annual Pig Roast
Belt sander racing



*Jewelry
Challenge*



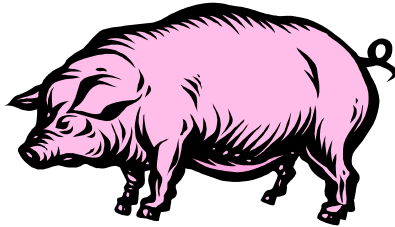
2006 Dues are Due



Elections



Pig Roast Update



Each fall the Bayou Woodturners gather to spend a little time together, eat some really good bar-b-que and have a good time. It's almost that time again and, with some changes in the works, I have to update you what's going on.

We've moved the date to October 29 in hopes of cooler weather and fewer bugs. We've also moved the time of lunch from noon to about 3:00 PM. Now we'll still gather at the lovely homestead of Dick and Julia Gahn in Covington, but we'll have a little fun before we eat.

We'll start the afternoon off at 1:00 PM with a very special tool auction. The Bayou Woodturners received about 7 tools from world-renowned woodturner, and founding member, Lyle Terrell. Lyle passed away a few years ago and these tools are his legacy. We'll hold a silent auction for these tools and sell them one every 15 minutes beginning at 2:00 PM. They will be sold by blind draw and every bid will count every 15 minutes.

At 2:00 we'll crank up the 6th annual Belt Sander Drag Races. This no-holds-barred event will be hosted by reigning champion Ben Sulzer (we wanted him out of the competition). All makes and models of belt sanders are invited to participate. The overall winner of the heats will take home a brand new belt sander, purchased just for this event. Then, if you can handle it, there will be a claiming race. The winner takes home both belt sanders. This may be your chance to unload some real junk, stop at Lowes on the way home and still be a winner.

And following the most fabulous lunch you'll eat all day, a dart competition with darts turned by you. Yes, make you very own darts and let's see what you can throw. I'm sharpening mine right now.

There will also be a special challenge for interested members, Jewelry. Wooden jewelry, turned for donation to the club, will be auctioned off at this event. Turn a piece and share a little happiness with the one you brought.

This is the social event of the weekend. Come on out and enjoy a good lunch, destroy some small power tools and face the perils of flying thingies with really sharp points. And this is how woodturners have fun.

It's all happening on October 29. More info about R.S.V.P., food you can bring and other stuff on the way.

Elections



A three person committee (*Ben Sulzer, Dave Beehler and Bill Toups*) has been put together to canvas the membership and come up with a slate of nominees for 2006. There are many positions to fill – please consider running for an officer post or even just volunteer to help with one of the many on-going Club projects.



Egg Challenge: September

“Over Easy” Turn a simple egg, if there is such a thing. Learn how to shape, reverse chuck and finish a piece, which has no flat surfaces to work to.

Jewelry Challenge: October **(at Pig Roast)**

Jewelry Challenge at the pig roast. This is a claiming challenge with the items being sold at the roast. Just go turn some jewelry; miniatures are just a little bit of fun.

Freedom Pen Project

Update

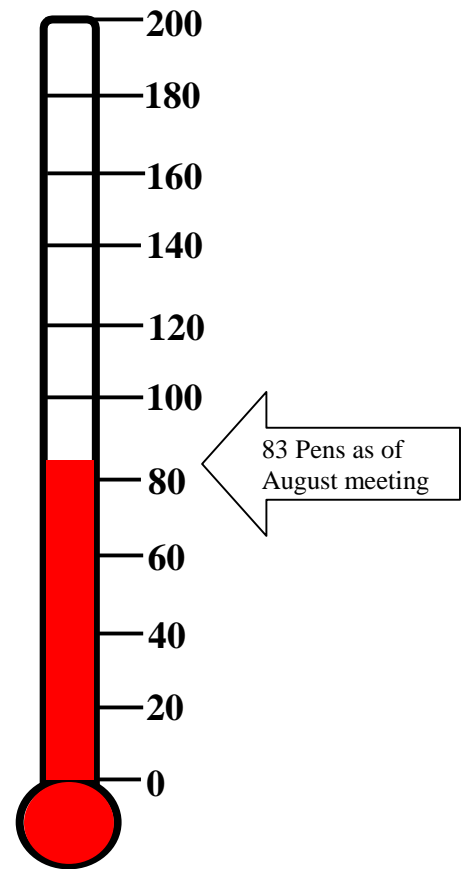
As of the August 13th meeting VP Dale Campo has collected 83 pens from the membership. With the promise of lots more on the way Dale has raised the bar and would like to collect not 100 but 200 pens by the October meeting to give to our troops overseas. Please help make this goal and get busy turning those pens.

Total pens: 83

<i>Eddie Castelin</i>	60
<i>Dennis Wall</i>	6
<i>Charlie Kragle</i>	6
<i>Dale Campo</i>	5
<i>Austin Fitzgerald</i>	3
<i>Ray Hoffman</i>	1



Dale collected 2 pens with no names attached, given to him by turners during the meeting. Please identify yourselves to Dale, so you can be given proper credit for your donation work.



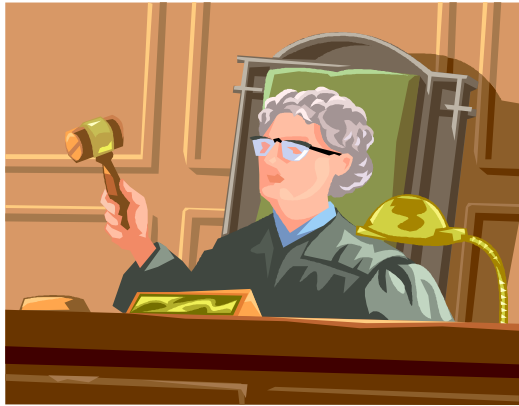
S.K.E.W. II

The Bayou Woodturners will host their second Skills Knowledge Education Workshop (S.K.E.W.) on September 24, 2005. Following our great success last fall with S.K.E.W. I, we have modified our program slightly to afford you a more enjoyable experience.

The highlights of S.K.E.W. II are:

- ❖ 4 turning stations with a total of 8 great demonstrations over an 8-hour period.
- ❖ A style and design workshop with a gallery for all members.
- ❖ New this year, a new woodturners workshop, with continuous programs geared for new turners and their questions.
- ❖ A hot lunch served on site.

Complete, up to the minute, updates are available at www.bayouwoodturners.com/skewII.htm. Joel Blazek is the Events Manager for this workshop and can be contacted at joel@bayouwoodturners.com



Calendar Challenge

Voting on the Photos for the Bayou Woodturners 2006 Turning Arts Calendar will take place at the September 10th meeting

The photo for the month of December is awarded to the winner of the Ornament Challenge. This year the Challenge was held during the August meeting and the winners – there was a tie – are Laura Ousset and Bobby McCarley (see page 8 for the winning photos).

One month as been set aside for the winning photo from the first group of Blockbuster entries.

Competition will be fierce to fill the remaining 10 months as 17 turners have entered 33 pieces of their best work

You are the judge, come to the next meeting and be sure to vote for your favorite.



The Bayou Woodturners extend a warm welcome to our newest member -*John Clinton* of Kenner, LA

Corporate Sponsors Bayou Woodturners

**R.J. Marchand
Contractors Specialties Inc.
3515 Division Street
Metairie, La
(504) 888-2922**

**Riverside Lumber Co.
5451 Morrison Rd.
New Orleans, LA. 70126
(504) 242-6624**



**1 Industrial
Parkway
Ponchatoula,
La
(985) 386-6079**

**Craft Supplies USA
www.woodturnerscatalog.com**

**KLINGSPOR'S
WOODWORKING SHOP**
"Quality Tools and Supplies for the Woodworker"

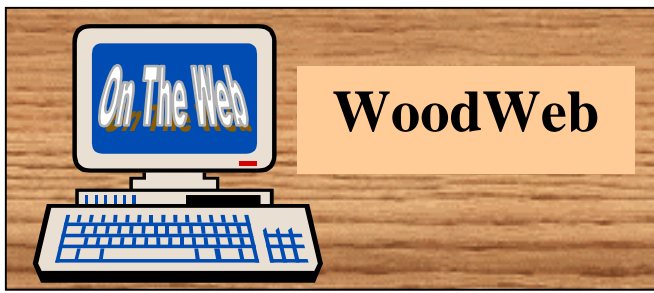
**1-800-228-0000
www.woodworkingshop.com**

If you have any questions, comments, turning tips, articles, photos, etc. you wish to put in the Newsletter please contact

Jerry Markowitz at:

email - jerrymarko@yahoo.com
mail - 620 Chambertin Dr.
Kenner, LA 70065
phone (504) 464-6050



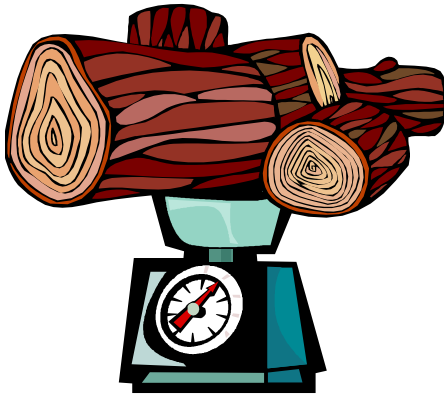


WoodWeb

This month's website – WoodWeb (www.woodweb.com) contains a wealth of information not just for the turner but also for the general woodworker. There are four main divisions to the website: **Resources, Buy & Sell, Forums, Knowledge Base** (which contains an extensive collection of woodworking articles from wood industry magazines and experts).

Under **Resources** you will find almost 20 subcategories. Next month I will delve a little deeper into *The Wood Doctor*, but this month we focus on the *Lumber and Timber Calculators*.

Clicking on the highlighted *Lumber and Timber Calculators* category will bring you to a page that contains eight useful calculators – everything from Wood Shrinkage, Hardwood Lumber Board Footage, to a Door and Finished Material Weight Calculator.



But the one that I found most interesting for the woodturner is the **Estimated Log Weight Calculator**.

Clicking on that calculator brings up a screen where you input the species of wood, the diameter of the log, and length (the calculator can even figure out the weight of a nonsymmetrical log – say one end is 12 in diameter and the other is 16 in.).

For example say you found a cherry tree and chain sawed a piece that was 10 in diameter and one end and 14 in at the other and was 3 feet long – How heavy will this log be? ANSWER: 125 lbs. What if the tree was a silver maple instead? What would the log weigh? ANSWER: 117 lbs.

Never throw your back out again. Now you will know the exact weight of the logs you are cutting and carrying to your truck.

Eddie Castelin – Turns a Thin Natural Edge Bowl



Member's Gallery – see more on pages 9 -10

Christmas Ornament Challenge



Bobby
McCarley



Laura
Ousset

Voting on Best of Show produced a tie between Bobby McCarley & Laura Ousset



Jerry Markowitz



O B Lacoste



Dale Campo



Check out the *August* Issue of the Bayou Skew to see the other entries in the Ornament Challenge

Member's Gallery



George Meche - Cypress



O B Lacoste - Sycamore



O B Lacoste - Sycamore



Joel Blazek



Joel Blazek



Dennis Wall



Joel Blazek



George Meche



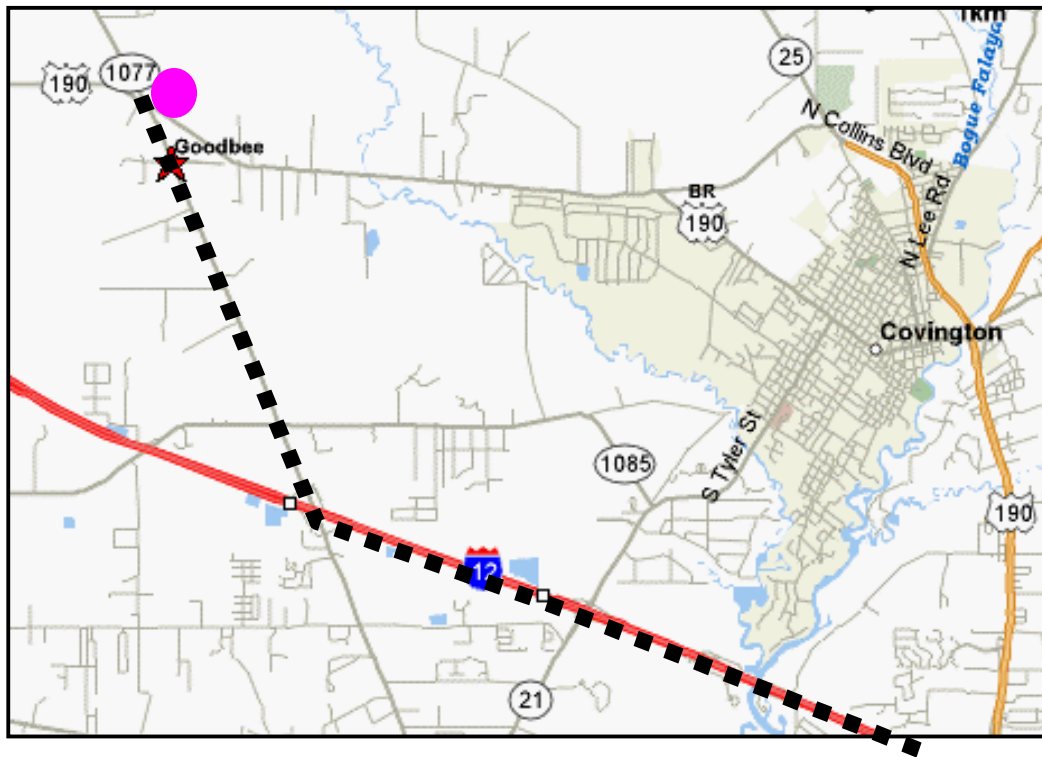
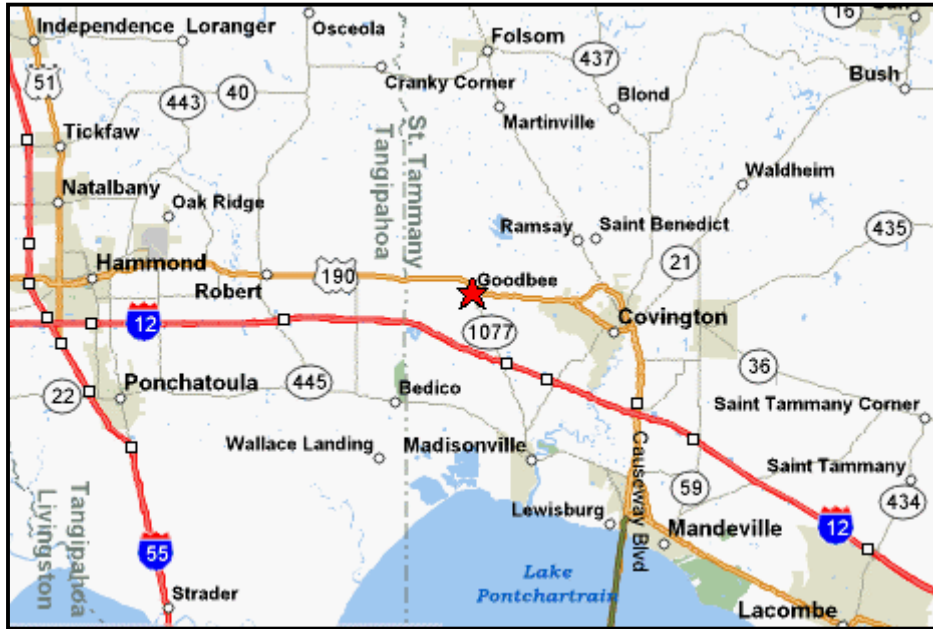
Al Reisz - Pecan



Collaborative Challenge

This July at the AAW symposium in Overland Park, Kansas the Bayou Woodturners presented its first Collaborative Challenge entry. Nine members participated in the building and design of the project: *Francis LeJeune, Eddie Castelin, Brian Harrel, Ray Hoffman, Don Mercante, Laura Ousset, Gordon Ousset, Dale Campo, and Steve Brunswick.*

Plans are underway for the next Collaborative Challenge for the AAW symposium in Louisville in June 2006. Don't miss out - if you wish to participate contact Steve Brunswick



Directions

Meeting will be at 74030 Hwy 1077, in Goodbee Commercial Park, Unit #6.

Basically, if you take Causeway over the bridge, go to I-12 towards Hammond, get off at Exit 57 (Madisonville/ Goodbee Exit) and take a right (north) to Goodbee. First light is Hwy. 1085, go through that. Second light is 190, go through that and I am about 200 yards up on the right, Furniture Medic sign is by the entrance.

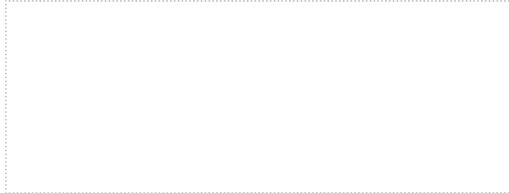


Bayou Woodturners
330 Highway Drive
Old Jefferson, LA
70121

Place
Stamp
Here

The Bayou Skew

The Bayou Woodturners' Newsletter



BlockBuster

What will these pieces of wood *turn* out to be. See the results of the next round of the Block-buster competition at the October meeting